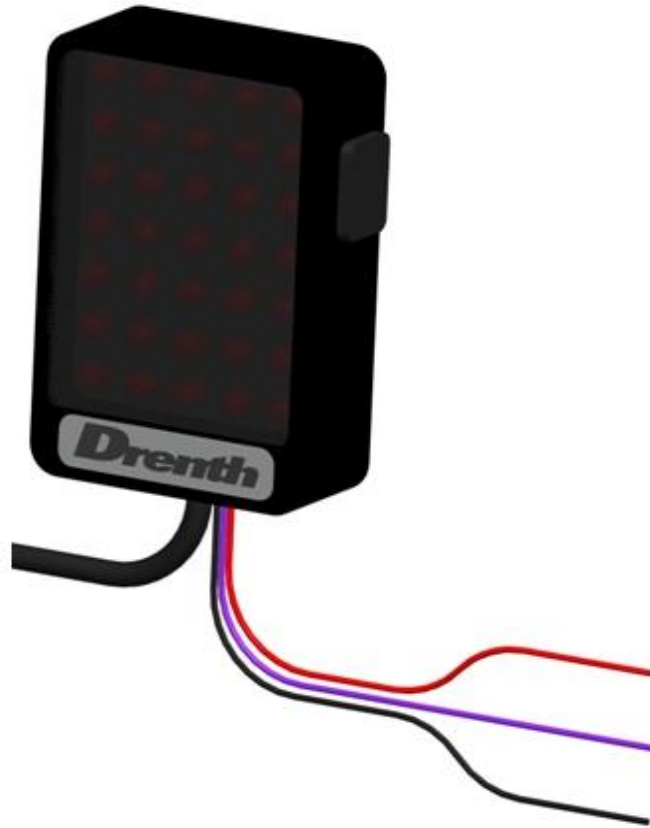


Drenth

motorsport gearboxes

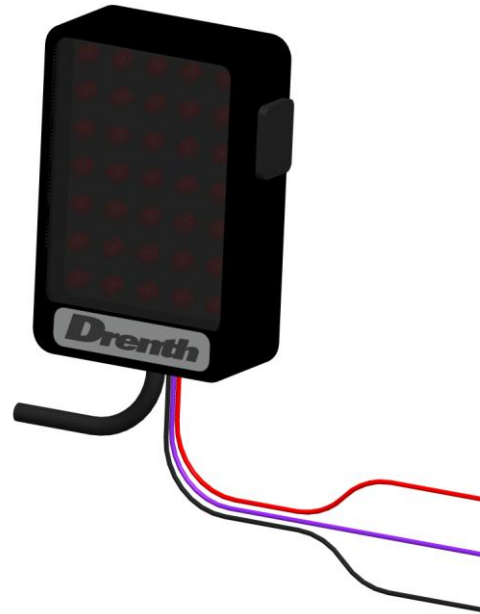
Drenth Gear Indicator



Description

The Drenth Gear indicator is a display unit that can be used with any Drenth gearbox with a rotary sensor. Any gear order can be accommodated with up to 8 forward gears besides neutral and reverse.

Programming the unit is achieved with software with an user-friendly programming routine.



*Drenth Motorsport Gearboxes
Fleuweweg 10
7468 AG Enter
The Netherlands
Phone: +31 (0)547 38 26 96
Fax: +31 (0)547 38 20 65
info@drenth-gearboxes.com
www.drenth-gearboxes.com*

Wiring diagram

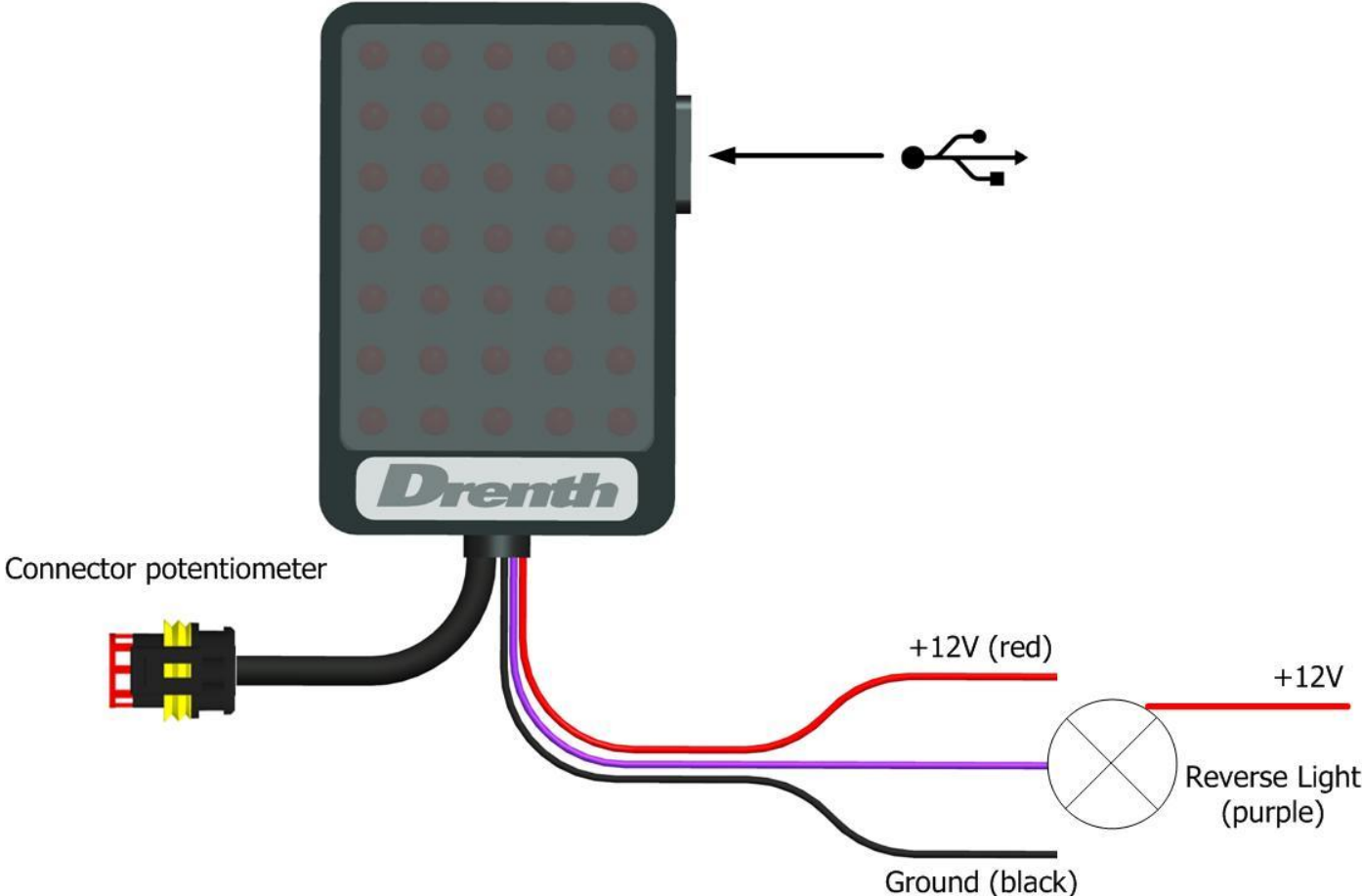


Figure 1: Wiring diagram

Software functions

1. Loading settings from file

Opens a dialog box where you can open a saved settings file.

2. Save settings to file

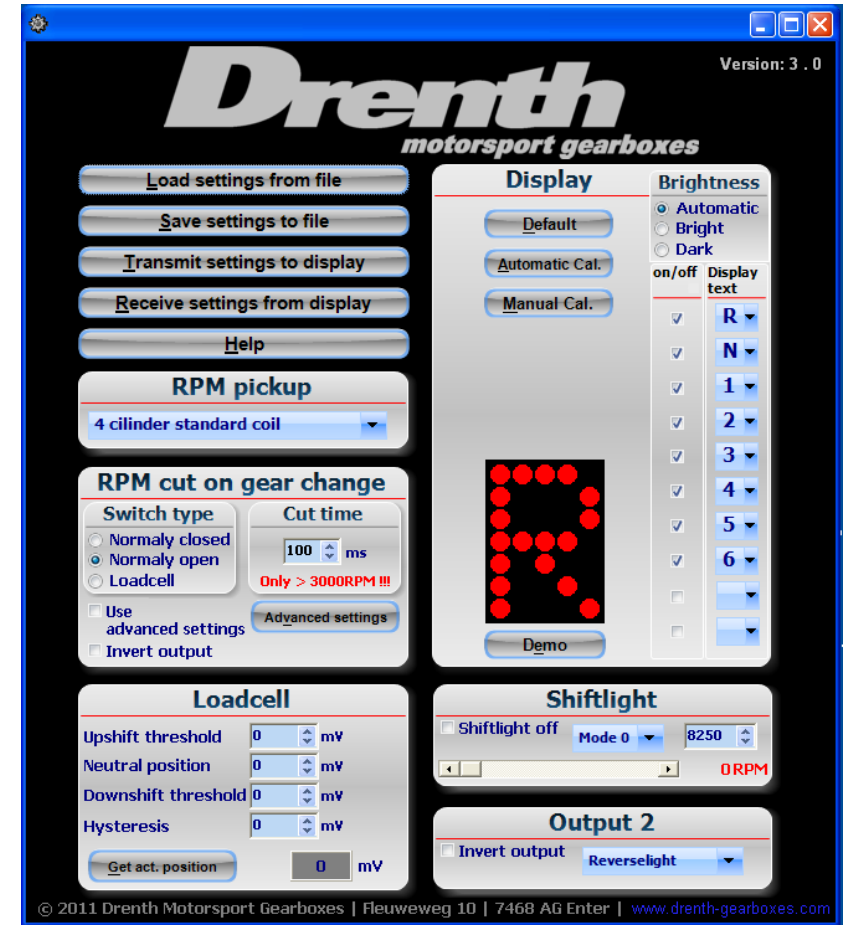
Opens a dialog box to save the settings that you currently programmed.

3. Transmit settings to display

Sends the display setting that are currently programmed to the display unit.

4. Receive settings from display

Reads the settings that are in the display unit. It's important to do this first. The software will always start with the default settings.

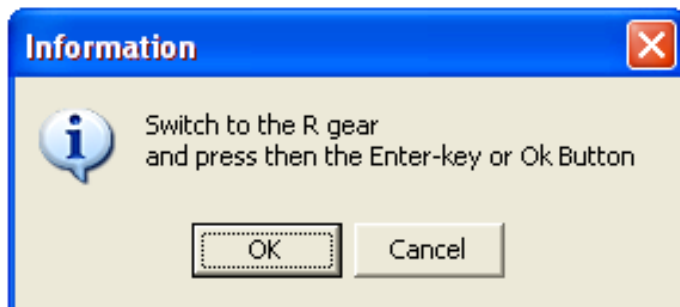


5. Default

With this button the software will load the default settings. Previous programmed data will be lost.

6. Automatic calibration

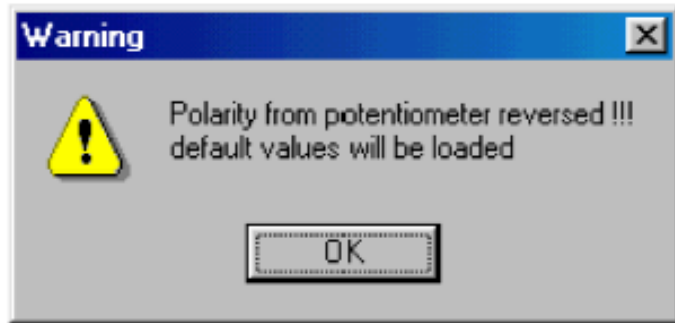
First receive settings from display! With this button the potentiometer that is mounted in the gearbox can be calibrated. After pressing this button a dialog box will open and you will be asked to switch to the reverse gear.



When the gear is selected press the OK button. Repeat until the last gear is done. When you are done press the [**Transmit settings to display**] to send the settings to the display.

7. Potentiometer

Please note: if the potentiometer is not working properly, then this message will appear. It can be that the potentiometer does not change or the polarity is reversed. The potentiometer must be turned 180 degrees when this message appears.



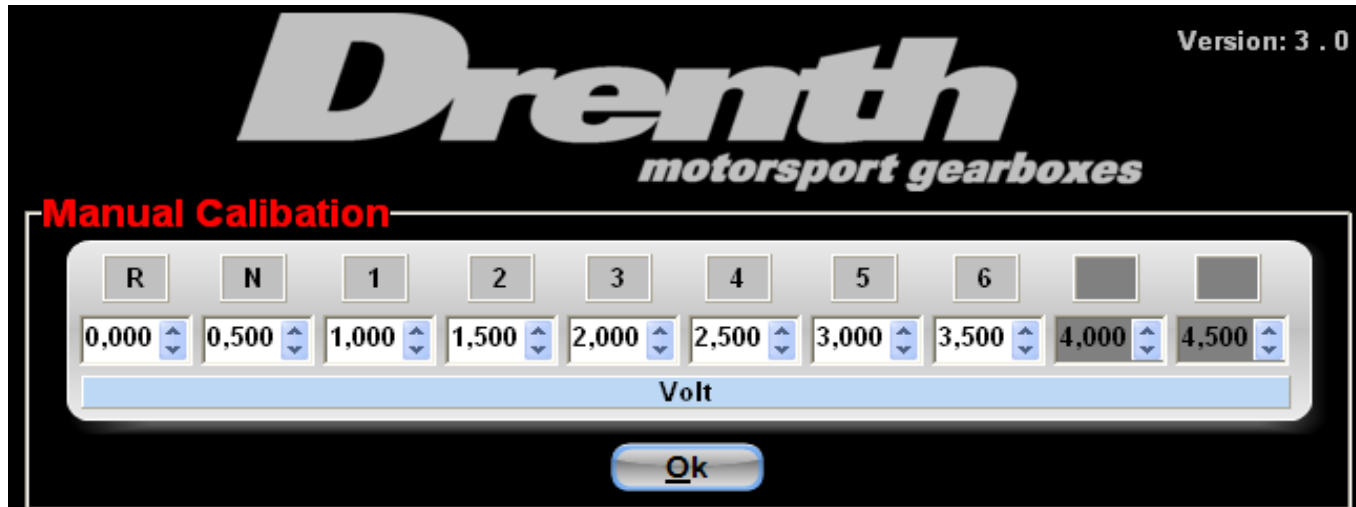
8. Output 2

You need to set the [output 2] on reverse light. When the reverse gear is selected the purple wire will be switched to ground. To reverse the signal you can select the box [invert output].



8. Manual calibration

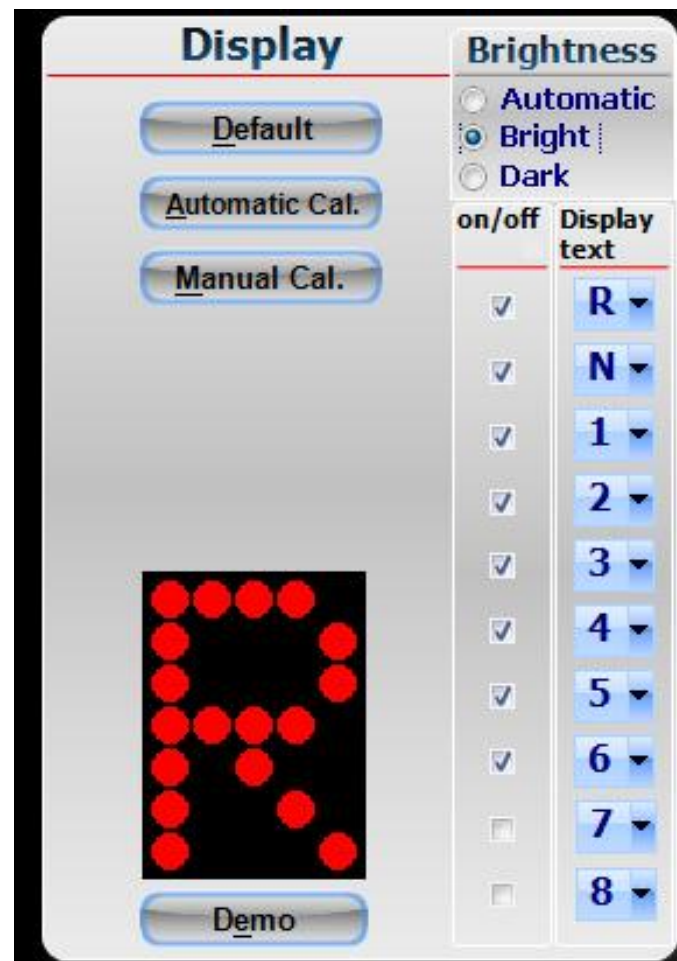
With this function you can do the manual calibration.



First click on receive setting form display, then start with manual calibration. The values must increase otherwise the display will show an incorrect value. If the potentiometer gives a voltage that is between two gear positions the display will show [x] to show you the gearbox is not properly engaged.

9. Number of gear positions

With the [on/off] setting you can set how many gear positions are used, it's important to set this correctly. The function [Automatic Cal.] uses these values to see how many gear positions there are, and if not set correctly [Automatic Cal.] it will not function. With [Display text] you can set in which order and how many gears there are.



Contact Information

Address

Drenth Motorsport Gearboxes
Fleuweweg 10
7468 AG Enter
The Netherlands
Phone: +31 (0)547 38 26 96
Fax: +31 (0)547 38 20 65
www.drenth-gearboxes.com
info@drenth-gearboxes.com

Contact Persons

Sales department:

Stefan Olijve
Stefan@drenth-gearboxes.com

Engineering:

Jeroen Grolleman
Jeroen@drenth-gearboxes.com

www.drenth-gearboxes.com

Drenth
motorsport gearboxes

Pole Position
In gearboxes